



State of Arizona Budget Request

State Agency
Arizona Finance Authority

A.R.S. Citation: 41-5301

Governor DUCEY:

This and the accompanying budget schedules, statements and explanatory information constitute the operating budget request for this agency for Fiscal Year 2018.

To the best of my knowledge all statements and explanations contained in the estimates submitted are true and correct.

Agency Head: **Lorenzo Romero**

Title: **Executive Director**

(signature)

Phone: **(602) 364-1324**

Prepared By: **Michael D. Clark**

Email Address: **mclark@azwifa.gov**

Date Prepared: **Tuesday, August 30, 2016**

Non-Appropriated Funds

	FY 2017 Expd. Plan	FY 2018 Fund. Issue	FY 2018 Total Budget
Total Amount Planned:	205,017.5	0.0	205,017.5
Federal Grant Fund	27,720.6	0.0	27,720.6
Clean Water Revolving Fund	111,626.9	0.0	111,626.9
Drinking Water Revolving Fund	65,458.8	0.0	65,458.8
Greater AZ Development Authority Revolving Fund	211.2	0.0	211.2

Governor's Office of
Strategic Planning and Budgeting
AUG 31 2016



State of Arizona Budget Request

State Agency

Water Infrastructure Finance Authority

A.R.S. Citation: **Title 49-1201**


Governor DUCEY:

This and the accompanying budget schedules, statements and explanatory information constitute the operating budget request for this agency for Fiscal Year 2018.

To the best of my knowledge all statements and explanations contained in the estimates submitted are true and correct.

Agency Head: **Michael D. Clark**

Title: **Controller**


(signature)

Phone: **(602) 364-1324**

Prepared By: **Michael D. Clark**

Email Address: **mclark@azwifa.gov**

Date Prepared:

Non-Appropriated Funds

	FY 2017 Expd. Plan	FY 2018 Fund. Issue	FY 2018 Total Budget
Total Amount Planned:	0.0	0.0	0.0
Federal Capitalization Grant	0.0	0.0	0.0
Clean Water Revolving Fund	0.0	0.0	0.0
Drinking Water Revolving Fund	0.0	0.0	0.0
Greater AZ Development authority Revolving Fund	0.0	0.0	0.0

Revenue Schedule

Agency: WFA Water Infrastructure Finance Authority

Fund: 2000 Federal Capitalization Grant

AFIS Code	Category of Receipt and Description	FY 2016	FY 2017	FY 2018
4211	FEDERAL GRANTS	28,543.1	0.0	0.0
Fund Total:		28,543.1	0.0	0.0

Revenue Schedule

Agency: WFA Water Infrastructure Finance Authority

Fund: 2000 Federal Capitalization Grant

Justification: Revenue is from awarded or projected federal funds.

Revenue Schedule

Agency: WFA Water Infrastructure Finance Authority
Fund: 2254 Clean Water Revolving Fund

AFIS Code	Category of Receipt and Description	FY 2016	FY 2017	FY 2018
4236	STATE AND LOCAL GOVERNMENT - OTHER	297,040.1	0.0	0.0
4631	TREASURERS INTEREST INCOME	1,407.4	0.0	0.0
Fund Total:		298,447.5	0.0	0.0

Revenue Schedule

Agency: WFA Water Infrastructure Finance Authority

Fund: 2254 Clean Water Revolving Fund

Justification: The Clean Water and Drinking Water Revolving Funds were established to provide subsidized, low-interest loans to water and waste water systems within the State of Arizona.

Revenues are derived from:

- (a) Grants from the Federal Government
- (b) Principal and Interest payments received from borrowers
- (c) Administrative fee payments received from borrowers
- (d) Interest income earned on funds invested with the State Treasurer's Office
- (e) Bond proceeds
- (f) State Match appropriations from the State of Arizona
- (g) Interest earned on Guaranteed Investment Contracts (GIC) from a variety of providers

Methodology Used In Projections - (a) Federal allocations to the States are published each year. Future projections are based on prior year allocations along with any information that there will be a change in the allocation for Arizona. (b & c) Amortization schedules of borrower loan repayments throughout the life of the loan. (d) Historical information and comparison to commitment levels which may increase or decrease funds invested. The amount of bond proceeds is determined by comparing commitment levels to cash available for disbursements to borrowers. (f) Set by the State Legislature. (g) Defined by Cash Flows provided by Financial Advisors and GIC providers.

The earnings for FY 2016 are excessive due to eight (8) loans being prepaid in FY 2016. The loan payments, which also included their FY 2016 annual payment, totaled approximately \$197 million. These prepayments will cause future revenues to be reduced.

Revenue Schedule

Agency: WFA Water Infrastructure Finance Authority

Fund: 2307 Drinking Water Revolving Fund

AFIS Code	Category of Receipt and Description	FY 2016	FY 2017	FY 2018
4236	STATE AND LOCAL GOVERNMENT - OTHER	34,880.9	0.0	0.0
4631	TREASURERS INTEREST INCOME	650.5	0.0	0.0
Fund Total:		35,531.4	0.0	0.0

Revenue Schedule

Agency: WFA Water Infrastructure Finance Authority

Fund: 2307 Drinking Water Revolving Fund

Justification: The Clean Water and Drinking Water Revolving Funds were established to provide subsidized, low-interest loans to water and waste water systems within the State of Arizona.

Revenues are derived from:

- (a) Grants from the Federal Government
- (b) Principal and Interest payments received from borrowers
- (c) Administrative fee payments received from borrowers
- (d) Interest income earned on funds invested with the State Treasurer's Office
- (e) Bond proceeds
- (f) State Match appropriations from the State of Arizona
- (g) Interest earned on Guaranteed Investment Contracts (GIC) from a variety of providers

Methodology Used In Projections - (a) Federal allocations to the States are published each year. Future projections are based on prior year allocations along with any information that there will be a change in the allocation for Arizona. (b & c) Amortization schedules of borrower loan repayments throughout the life of the loan. (d) Historical information and comparison to commitment levels which may increase or decrease funds invested. (e) The amount of bond proceeds is determined by comparing commitment levels to cash available for disbursements to borrowers. (f) Set by the State Legislature. (g) Defined by Cash Flows provided by Financial Advisors and GIC providers.

The earnings for FY 2016 are slightly above projected revenues due to four (4) loans being prepaid in FY 2016. The loan payments, which also included their FY 2016 annual payment, totaled approximately \$1.8 million. These prepayments will cause future revenues to be reduced.

Revenue Schedule

Agency: WFA Water Infrastructure Finance Authority

Fund: 2311 Greater AZ Development authority Revolving Fund

AFIS Code	Category of Receipt and Description	FY 2016	FY 2017	FY 2018
4236	STATE AND LOCAL GOVERNMENT - OTHER	0.3	0.0	0.0
4631	TREASURERS INTEREST INCOME	91.3	0.0	0.0
Fund Total:		91.6	0.0	0.0

Revenue Schedule

Agency: WFA Water Infrastructure Finance Authority

Fund: 2311 Greater AZ Development authority Revolving Fund

Justification: # 4236 State & Local Government Other
This was excess earnings from an escrow account

4631 Treasurer's Interest Income
The State Treasurer invests and divests monies in the fund. Interest earned on these investments are credited to the Fund.

Sources and Uses of Funds

Agency:	WFA Water Infrastructure Finance Authority
Fund:	2000 Federal Capitalization Grant

Cash Flow Summary	Actual FY 2016	Estimate FY 2017	Estimate FY 2018
Balance Forward from Prior Year	0.0	0.0	0.0
Revenue (From Revenue Schedule)	28,543.1	0.0	0.0
Total Available	28,543.1	0.0	0.0
Total Appropriated Disbursements	0.0	0.0	0.0
Total Non-Appropriated Disbursements	28,543.1	0.0	0.0
Balance Forward to Next Year	0.0	0.0	0.0

Appropriated Expenditure	Actual FY 2016	Estimate FY 2017	Estimate FY 2018
Expenditure Categories			
Personal Services	0.0	0.0	0.0
Employee Related Expenses	0.0	0.0	0.0
Prof. And Outside Services	0.0	0.0	0.0
Travel - In State	0.0	0.0	0.0
Travel - Out of State	0.0	0.0	0.0
Food	0.0	0.0	0.0
Aid to Organizations and Individuals	0.0	0.0	0.0
Other Operating Expenses	0.0	0.0	0.0
Equipment	0.0	0.0	0.0
Capital Outlay	0.0	0.0	0.0
Debt Service	0.0	0.0	0.0
Cost Allocation	0.0	0.0	0.0
Transfers	0.0	0.0	0.0
Expenditure Categories Total:	0.0	0.0	0.0
Non-Lapsing Authority from Prior Years	0.0	0.0	0.0
Administrative Adjustments	0.0	0.0	0.0
Capital Projects (Land, Buildings,Improvements)	0.0	0.0	0.0
Appropriated 27th Pay Roll	0.0	0.0	0.0
Legislative Fund Transfers	0.0	0.0	0.0
Appropriated Expenditure Total:	0.0	0.0	0.0
Appropriated FTE:	0.0	0.0	0.0

Non-Appropriated Expenditure	Actual FY 2016	Estimate FY 2017	Estimate FY 2018
Expenditure Categories			
Personal Services	732.7	0.0	0.0
Employee Related Expenses	280.7	0.0	0.0
Prof. And Outside Services	152.1	0.0	0.0
Travel - In State	9.5	0.0	0.0
Travel - Out of State	3.4	0.0	0.0
Food	0.0	0.0	0.0
Aid to Organizations and Individuals	25,504.3	0.0	0.0
Other Operating Expenses	101.7	0.0	0.0
Equipment	10.9	0.0	0.0
Capital Outlay	0.0	0.0	0.0
Debt Service	0.0	0.0	0.0
Cost Allocation	0.0	0.0	0.0
Transfers	1,747.8	0.0	0.0
Expenditure Categories Total:	28,543.1	0.0	0.0
Cap Transfer due to Fund Balance	0.0	0.0	0.0
Prior Commitments or Obligated Expenditures	0.0	0.0	0.0
Non Appropriated 27th Pay Roll	0.0	0.0	0.0
Non-Appropriated Expenditure Total:	28,543.1	0.0	0.0
Non-Appropriated FTE:	13.5	0.0	0.0

Sources and Uses of Funds

Agency: WFA Water Infrastructure Finance Authority

Fund Justification

Justification:

Fund Description

Source: Federal Capitalization Grants

Use: WIFA receives funding thru two major grant programs – the Clean Water and Drinking Water grants

Clean Water

The primary purpose of this program is to capitalize Arizona's Clean State Revolving Fund (SRF) for financing wastewater, non-point source and other infrastructure improvements allowed by the Clean Water Act, Title VI. WIFA will lend these funds to municipalities in AZ at below market interest rates to address their wastewater infrastructure needs and to vitalize AZ's economy. The grant also provides funds for administration of the Arizona Clean Water SRF.

Drinking Water

The primary purpose of this grant is to capitalize Arizona's Drinking Water SRF program for financing drinking water infrastructure improvements. WIFA will lend these funds to drinking water systems in AZ at below market interest rates to address their drinking water infrastructure needs and to vitalize AZ's economy. The grant also provides set-asides for a number of programs such as administration of the Drinking Water SRF program, Public Water Systems Supervision, state drinking water capacity development, technical assistance to small systems and source water protection and wellhead protection programs.

OSP:

Sources and Uses of Funds

Agency:	WFA Water Infrastructure Finance Authority
Fund:	2254 Clean Water Revolving Fund

Cash Flow Summary	Actual FY 2016	Estimate FY 2017	Estimate FY 2018
Balance Forward from Prior Year	67,222.6	215,101.9	0.0
Revenue (From Revenue Schedule)	298,447.5	0.0	0.0
Total Available	365,670.1	215,101.9	0.0
Total Appropriated Disbursements	0.0	215,101.9	0.0
Total Non-Appropriated Disbursements	150,568.2	0.0	0.0
Balance Forward to Next Year	215,101.9	0.0	0.0

Appropriated Expenditure	Actual FY 2016	Estimate FY 2017	Estimate FY 2018
Expenditure Categories			
Personal Services	0.0	0.0	0.0
Employee Related Expenses	0.0	0.0	0.0
Prof. And Outside Services	0.0	0.0	0.0
Travel - In State	0.0	0.0	0.0
Travel - Out of State	0.0	0.0	0.0
Food	0.0	0.0	0.0
Aid to Organizations and Individuals	0.0	0.0	0.0
Other Operating Expenses	0.0	0.0	0.0
Equipment	0.0	0.0	0.0
Capital Outlay	0.0	0.0	0.0
Debt Service	0.0	0.0	0.0
Cost Allocation	0.0	0.0	0.0
Transfers	0.0	0.0	0.0
Expenditure Categories Total:	0.0	0.0	0.0
Non-Lapsing Authority from Prior Years	0.0	0.0	0.0
Administrative Adjustments	0.0	0.0	0.0
Capital Projects (Land, Buildings,Improvements)	0.0	0.0	0.0
Appropriated 27th Pay Roll	0.0	0.0	0.0
Legislative Fund Transfers	0.0	215,101.9	0.0
Appropriated Expenditure Total:	0.0	215,101.9	0.0
Appropriated FTE:	0.0	0.0	0.0

Non-Appropriated Expenditure	Actual FY 2016	Estimate FY 2017	Estimate FY 2018
Expenditure Categories			
Personal Services	203.5	0.0	0.0
Employee Related Expenses	70.3	0.0	0.0
Prof. And Outside Services	118.3	0.0	0.0
Travel - In State	2.5	0.0	0.0
Travel - Out of State	0.6	0.0	0.0
Food	0.0	0.0	0.0
Aid to Organizations and Individuals	64,949.6	0.0	0.0
Other Operating Expenses	68.6	0.0	0.0
Equipment	1.6	0.0	0.0
Capital Outlay	0.0	0.0	0.0
Debt Service	68,720.1	0.0	0.0
Cost Allocation	0.0	0.0	0.0
Transfers	16,433.2	0.0	0.0
Expenditure Categories Total:	150,568.2	0.0	0.0
Cap Transfer due to Fund Balance	0.0	0.0	0.0
Prior Commitments or Obligated Expenditures	0.0	0.0	0.0
Non Appropriated 27th Pay Roll	0.0	0.0	0.0
Non-Appropriated Expenditure Total:	150,568.2	0.0	0.0
Non-Appropriated FTE:	0.8	0.0	0.0

Sources and Uses of Funds

Agency: WFA Water Infrastructure Finance Authority

Fund Justification

Justification: See Attached

Fund Description

Source:	Established pursuant to A.R.S. 49-1221 <ol style="list-style-type: none">1. Monies appropriated by the legislature for the clean water revolving fund.2. Monies received for that purpose from the United States Government, including capitalization grants.3. Monies received from the issuance and sale of bonds under A.R.S 49-1261.4. Monies received from political subdivision or Indian tribes as loan repayments, interest and penalties.5. Interest and other income received from investing monies in the fund.6. Gifts grants and donations received for that purpose from any public or private source.
Use:	<ol style="list-style-type: none">1. Making wastewater treatment facility and nonpoint source project loans to political subdivisions and Indian tribes under A.R.S. 49-1225.2. Purchasing or refinancing debt obligations of political subdivision or refinancing debt obligations of Indian tribes at or below market rates, provided that the debt obligation was issued after March 7, 1985 for the purpose of constructing, acquiring or improving wastewater treatment facilities or nonpoint source projects.3. Providing financial assistance to political subdivisions to purchase insurance for local wastewater treatment facility or nonpoint source project bond obligations.4. Paying the costs to administer the fund, but no more than four percent of the aggregate of federal capitalization grants may be used to pay these costs. Monies from other sources may be used without limit to pay these costs.5. Funding other programs that are authorized for federal monies deposited in the fund including programs relating to nonpoint source discharges.6. Providing linked deposit guarantees through third party lenders by depositing monies with the lender on the condition that the lender make a loan on terms approve by the board, at a rate of return on the deposit approved by the board and the state treasurer and by giving the lender recourse against the deposit of loan repayments that are not made when due.
OSPB:	The fund is made to parallel the funding mechanism created by the US Congress for clean water systems. Revenues in the Fund consist of monies appropriated by the legislature, monies received for that purpose from the United States government, including capitalization grants; monies received from the issuance and sale of bond; monies received from political subdivision or Indian tribes as loan repayments; interest and penalties; gifts, grants and donations received for that purpose from any public or private source. For administering loans to political subdivisions and Indian tribes for wastewater treatment plan capital improvements. Monies in the Fund are used for capitalization grants and provides loans to political subdivisions and Indian tribe for the construction of publicly owned wastewater treatment works as defined in section 212 of the Clean Water Act.

Sources and Uses of Funds

Agency:	WFA Water Infrastructure Finance Authority
Fund:	2307 Drinking Water Revolving Fund

Cash Flow Summary	Actual FY 2016	Estimate FY 2017	Estimate FY 2018
Balance Forward from Prior Year	78,907.7	72,157.6	0.0
Revenue (From Revenue Schedule)	35,531.4	0.0	0.0
Total Available	114,439.1	72,157.6	0.0
Total Appropriated Disbursements	0.0	72,157.6	0.0
Total Non-Appropriated Disbursements	42,281.4	0.0	0.0
Balance Forward to Next Year	72,157.6	0.0	0.0

Appropriated Expenditure	Actual FY 2016	Estimate FY 2017	Estimate FY 2018
Expenditure Categories			
Personal Services	0.0	0.0	0.0
Employee Related Expenses	0.0	0.0	0.0
Prof. And Outside Services	0.0	0.0	0.0
Travel - In State	0.0	0.0	0.0
Travel - Out of State	0.0	0.0	0.0
Food	0.0	0.0	0.0
Aid to Organizations and Individuals	0.0	0.0	0.0
Other Operating Expenses	0.0	0.0	0.0
Equipment	0.0	0.0	0.0
Capital Outlay	0.0	0.0	0.0
Debt Service	0.0	0.0	0.0
Cost Allocation	0.0	0.0	0.0
Transfers	0.0	0.0	0.0
Expenditure Categories Total:	0.0	0.0	0.0
Non-Lapsing Authority from Prior Years	0.0	0.0	0.0
Administrative Adjustments	0.0	0.0	0.0
Capital Projects (Land, Buildings,Improvements)	0.0	0.0	0.0
Appropriated 27th Pay Roll	0.0	0.0	0.0
Legislative Fund Transfers	0.0	72,157.6	0.0
Appropriated Expenditure Total:	0.0	72,157.6	0.0
Appropriated FTE:	0.0	0.0	0.0

Non-Appropriated Expenditure	Actual FY 2016	Estimate FY 2017	Estimate FY 2018
Expenditure Categories			
Personal Services	180.6	0.0	0.0
Employee Related Expenses	65.4	0.0	0.0
Prof. And Outside Services	119.5	0.0	0.0
Travel - In State	3.0	0.0	0.0
Travel - Out of State	0.5	0.0	0.0
Food	0.0	0.0	0.0
Aid to Organizations and Individuals	42,384.2	0.0	0.0
Other Operating Expenses	32.5	0.0	0.0
Equipment	2.7	0.0	0.0
Capital Outlay	0.0	0.0	0.0
Debt Service	15,906.1	0.0	0.0
Cost Allocation	0.0	0.0	0.0
Transfers	(16,413.2)	0.0	0.0
Expenditure Categories Total:	42,281.4	0.0	0.0
Cap Transfer due to Fund Balance	0.0	0.0	0.0
Prior Commitments or Obligated Expenditures	0.0	0.0	0.0
Non Appropriated 27th Pay Roll	0.0	0.0	0.0
Non-Appropriated Expenditure Total:	42,281.4	0.0	0.0
Non-Appropriated FTE:	3.3	0.0	0.0

Sources and Uses of Funds

Agency: WFA Water Infrastructure Finance Authority

Fund Justification

Justification: See Attached

Fund Description

Source:	Established pursuant to A.R.S. 49-1241 <ol style="list-style-type: none">1. Monies appropriated by the legislature for the drinking water revolving fund.2. Monies received for that purpose from the United States Government, including capitalization grants.3. Monies received from the issuance and sale of bonds under A.R.S. 49-1261.4. Monies received from drinking water facilities as loan repayments, interest and penalties.5. Interest and other income received from investing monies in the fund.6. Gifts grants and donations received for that purpose from any public or private source.
Use:	<ol style="list-style-type: none">1. Making drinking water facility loans including forgivable principal to political subdivisions and Indian tribes under A.R.S. 49-1225 and other eligible entities as determined by the board pursuant to the Safe Drinking Water Act.2. Making drinking water facility loans under A.R.S. 49-1244.3. Purchasing or refinancing debt obligations of drinking water facilities at or below market rates, provided that the debt obligation was issued after July 1, 1993 for the purpose of constructing, acquiring or improving drinking water facilities or nonpoint source projects.4. Providing financial assistance to drinking water facilities to purchase insurance for local drinking water facility bond obligations.5. Paying the costs to administer the fund, but no more than four percent of the aggregate of federal capitalization grants may be used to pay these costs. Monies from other sources may be used without limit to pay these costs.6. Funding other programs that are authorized pursuant to the Safe Drinking Water Act.7. Providing linked deposit guarantees through third party lenders by depositing monies with the lender on the condition that the lender make a loan on terms approved by the board, at a rate of return on the deposit approved by the board and the state treasurer and by giving the lender recourse against the deposit of loan repayments that are not made when due.
OSP:	Fund receives revenue from State Contributions to provide match requirement for contribution appropriated by the US Congress which flow through the United States Environmental Protection Agency. The program provides financial assistance and make loans to eligible drinking water systems for the purpose of constructing, acquiring or improving drinking water facilities.

Sources and Uses of Funds

Agency:	WFA Water Infrastructure Finance Authority
Fund:	2311 Greater AZ Development authority Revolving Fund

Cash Flow Summary	Actual FY 2016	Estimate FY 2017	Estimate FY 2018
Balance Forward from Prior Year	13,346.7	13,390.8	0.0
Revenue (From Revenue Schedule)	91.6	0.0	0.0
Total Available	13,438.3	13,390.8	0.0
Total Appropriated Disbursements	0.0	13,390.8	0.0
Total Non-Appropriated Disbursements	47.6	0.0	0.0
Balance Forward to Next Year	13,390.8	0.0	0.0

Appropriated Expenditure	Actual FY 2016	Estimate FY 2017	Estimate FY 2018
Expenditure Categories			
Personal Services	0.0	0.0	0.0
Employee Related Expenses	0.0	0.0	0.0
Prof. And Outside Services	0.0	0.0	0.0
Travel - In State	0.0	0.0	0.0
Travel - Out of State	0.0	0.0	0.0
Food	0.0	0.0	0.0
Aid to Organizations and Individuals	0.0	0.0	0.0
Other Operating Expenses	0.0	0.0	0.0
Equipment	0.0	0.0	0.0
Capital Outlay	0.0	0.0	0.0
Debt Service	0.0	0.0	0.0
Cost Allocation	0.0	0.0	0.0
Transfers	0.0	0.0	0.0
Expenditure Categories Total:	0.0	0.0	0.0
Non-Lapsing Authority from Prior Years	0.0	0.0	0.0
Administrative Adjustments	0.0	0.0	0.0
Capital Projects (Land, Buildings,Improvements)	0.0	0.0	0.0
Appropriated 27th Pay Roll	0.0	0.0	0.0
Legislative Fund Transfers	0.0	13,390.8	0.0
Appropriated Expenditure Total:	0.0	13,390.8	0.0
Appropriated FTE:	0.0	0.0	0.0

Non-Appropriated Expenditure	Actual FY 2016	Estimate FY 2017	Estimate FY 2018
Expenditure Categories			
Personal Services	4.6	0.0	0.0
Employee Related Expenses	1.4	0.0	0.0
Prof. And Outside Services	40.8	0.0	0.0
Travel - In State	0.0	0.0	0.0
Travel - Out of State	0.0	0.0	0.0
Food	0.0	0.0	0.0
Aid to Organizations and Individuals	0.0	0.0	0.0
Other Operating Expenses	0.0	0.0	0.0
Equipment	0.8	0.0	0.0
Capital Outlay	0.0	0.0	0.0
Debt Service	0.0	0.0	0.0
Cost Allocation	0.0	0.0	0.0
Transfers	0.0	0.0	0.0
Expenditure Categories Total:	47.6	0.0	0.0
Cap Transfer due to Fund Balance	0.0	0.0	0.0
Prior Commitments or Obligated Expenditures	0.0	0.0	0.0
Non Appropriated 27th Pay Roll	0.0	0.0	0.0
Non-Appropriated Expenditure Total:	47.6	0.0	0.0
Non-Appropriated FTE:	1.4	0.0	0.0

Sources and Uses of Funds

Agency: WFA Water Infrastructure Finance Authority

Fund Justification

Justification: See Attached

Fund Description

Source:	Established pursuant to ARS 41-2254 Monies in the fund consist of a one -time legislative appropriation of \$20 million, interest accrued and reimbursement.
Use:	Administered by the Water Infrastructure Finance Authority of Arizona, the fund helps local communities to develop and finance public Infrastructure projects. The fund also provides technical assistance to communities and is used to secure bond issues to lower project financing costs. \$11,965,000 of the fund balance is restricted from use by Bond Documents.
OSPB:	Section 43 of HB 2666, Chapter 372 , Fifty-second Legislature, Second Regular Session, moved the administration of the fund to the Arizona Finance Authority, Effective 8/6/16.

Summary of Expenditure and Budget Request for All Funds

Agency: WFA Water Infrastructure Finance Authority

Non-Appropriated

		FY 2016 Actual	FY 2017 Expd. Plan	FY 2018 Fund. Issue	FY 2018 Total
Cost Center/Program:					
1	Water Quality Program	221,392.7	0.0	0.0	0.0
2	Community Development	47.6	0.0	0.0	0.0
		221,440.3	0.0	0.0	0.0
Expenditure Categories					
	FTE	19.0	0.0	0.0	0.0
	Personal Services	1,121.3	0.0	0.0	0.0
	Employee Related Expenses	417.8	0.0	0.0	0.0
	Professional and Outside Services	430.7	0.0	0.0	0.0
	Travel In-State	14.9	0.0	0.0	0.0
	Travel Out of State	4.5	0.0	0.0	0.0
	Food (Library for Universities)	0.0	0.0	0.0	0.0
	Aid to Organizations and Individuals	132,838.1	0.0	0.0	0.0
	Other Operating Expenses	202.9	0.0	0.0	0.0
	Equipment	16.0	0.0	0.0	0.0
	Capital Outlay	0.0	0.0	0.0	0.0
	Debt Service	84,626.2	0.0	0.0	0.0
	Cost Allocation	0.0	0.0	0.0	0.0
	Transfers	1,767.8	0.0	0.0	0.0
Expenditure Categories Total:		221,440.3	0.0	0.0	0.0

Summary of Expenditure and Budget Request for All Funds

Agency: WFA Water Infrastructure Finance Authority

Agency Total for All Funds:	221,440.3	0.0	0.0	0.0			
-----------------------------	-----------	-----	-----	-----	--	--	--

Summary of Expenditure and Budget Request for Selected Funds

Agency:	WFA	Water Infrastructure Finance Authority
Fund:	2000	Federal Capitalization Grant (Non-Appropriated)

	FY 2016 Actual	FY 2017 Expd. Plan	FY 2018 Fund. Issue	FY 2018 Total
Cost Center/Program:				
1 Water Quality Program	28,543.1	0.0	0.0	0.0
	28,543.1	0.0	0.0	0.0
Expenditure Categories				
FTE	13.5	0.0	0.0	0.0
Personal Services	732.7	0.0	0.0	0.0
Employee Related Expenses	280.7	0.0	0.0	0.0
Professional and Outside Services	152.1	0.0	0.0	0.0
Travel In-State	9.5	0.0	0.0	0.0
Travel Out of State	3.4	0.0	0.0	0.0
Food (Library for Universities)	0.0	0.0	0.0	0.0
Aid to Organizations and Individuals	25,504.3	0.0	0.0	0.0
Other Operating Expenses	101.7	0.0	0.0	0.0
Equipment	10.9	0.0	0.0	0.0
Capital Outlay	0.0	0.0	0.0	0.0
Debt Service	0.0	0.0	0.0	0.0
Cost Allocation	0.0	0.0	0.0	0.0
Transfers	1,747.8	0.0	0.0	0.0
Expenditure Categories Total:	28,543.1	0.0	0.0	0.0
Fund Total:	28,543.1	0.0	0.0	0.0

Summary of Expenditure and Budget Request for Selected Funds

Agency:	WFA Water Infrastructure Finance Authority
Fund:	2254 Clean Water Revolving Fund (Non-Appropriated)

	FY 2016 Actual	FY 2017 Expd. Plan	FY 2018 Fund. Issue	FY 2018 Total
Cost Center/Program:				
1 Water Quality Program	150,568.2	0.0	0.0	0.0
	150,568.2	0.0	0.0	0.0
Expenditure Categories				
FTE	0.8	0.0	0.0	0.0
Personal Services	203.5	0.0	0.0	0.0
Employee Related Expenses	70.3	0.0	0.0	0.0
Professional and Outside Services	118.3	0.0	0.0	0.0
Travel In-State	2.5	0.0	0.0	0.0
Travel Out of State	0.6	0.0	0.0	0.0
Food (Library for Universities)	0.0	0.0	0.0	0.0
Aid to Organizations and Individuals	64,949.6	0.0	0.0	0.0
Other Operating Expenses	68.6	0.0	0.0	0.0
Equipment	1.6	0.0	0.0	0.0
Capital Outlay	0.0	0.0	0.0	0.0
Debt Service	68,720.1	0.0	0.0	0.0
Cost Allocation	0.0	0.0	0.0	0.0
Transfers	16,433.2	0.0	0.0	0.0
Expenditure Categories Total:	150,568.2	0.0	0.0	0.0
Fund Total:	150,568.2	0.0	0.0	0.0

Summary of Expenditure and Budget Request for Selected Funds

Agency:	WFA Water Infrastructure Finance Authority
Fund:	2307 Drinking Water Revolving Fund (Non-Appropriated)

	FY 2016 Actual	FY 2017 Expd. Plan	FY 2018 Fund. Issue	FY 2018 Total
Cost Center/Program:				
1 Water Quality Program	42,281.4	0.0	0.0	0.0
	42,281.4	0.0	0.0	0.0
Expenditure Categories				
FTE	3.3	0.0	0.0	0.0
Personal Services	180.6	0.0	0.0	0.0
Employee Related Expenses	65.4	0.0	0.0	0.0
Professional and Outside Services	119.5	0.0	0.0	0.0
Travel In-State	3.0	0.0	0.0	0.0
Travel Out of State	0.5	0.0	0.0	0.0
Food (Library for Universities)	0.0	0.0	0.0	0.0
Aid to Organizations and Individuals	42,384.2	0.0	0.0	0.0
Other Operating Expenses	32.5	0.0	0.0	0.0
Equipment	2.7	0.0	0.0	0.0
Capital Outlay	0.0	0.0	0.0	0.0
Debt Service	15,906.1	0.0	0.0	0.0
Cost Allocation	0.0	0.0	0.0	0.0
Transfers	(16,413.2)	0.0	0.0	0.0
Expenditure Categories Total:	42,281.4	0.0	0.0	0.0
Fund Total:	42,281.4	0.0	0.0	0.0

Summary of Expenditure and Budget Request for Selected Funds

Agency:	WFA Water Infrastructure Finance Authority
Fund:	2311 Greater AZ Development authority Revolving Fund (Non-Appropriated)

	FY 2016 Actual	FY 2017 Expd. Plan	FY 2018 Fund. Issue	FY 2018 Total
Cost Center/Program:				
2 Community Development	47.6	0.0	0.0	0.0
	47.6	0.0	0.0	0.0
Expenditure Categories				
FTE	1.4	0.0	0.0	0.0
Personal Services	4.6	0.0	0.0	0.0
Employee Related Expenses	1.4	0.0	0.0	0.0
Professional and Outside Services	40.8	0.0	0.0	0.0
Travel In-State	0.0	0.0	0.0	0.0
Travel Out of State	0.0	0.0	0.0	0.0
Food (Library for Universities)	0.0	0.0	0.0	0.0
Aid to Organizations and Individuals	0.0	0.0	0.0	0.0
Other Operating Expenses	0.0	0.0	0.0	0.0
Equipment	0.8	0.0	0.0	0.0
Capital Outlay	0.0	0.0	0.0	0.0
Debt Service	0.0	0.0	0.0	0.0
Cost Allocation	0.0	0.0	0.0	0.0
Transfers	0.0	0.0	0.0	0.0
Expenditure Categories Total:	47.6	0.0	0.0	0.0
Fund Total:	47.6	0.0	0.0	0.0

Summary of Expenditure and Budget Request for Selected Funds

Agency:	WFA Water Infrastructure Finance Authority
Fund:	2311 Greater AZ Development authority Revolving Fund (Non-Appropriated)

	FY 2016 Actual	FY 2017 Expd. Plan	FY 2018 Fund. Issue	FY 2018 Total
Agency Total for Selected Funds	221,440.3	0.0	0.0	0.0

Program Summary of Expenditures and Budget Request

Agency:	WFA	Water Infrastructure Finance Authority
Program:	1	Water Quality Program

	FY 2016 Actual	FY 2017 Expd. Plan	FY 2018 Fund. Issue	FY 2018 Total
Program Summary				
1-1 Water Infrastructure Finance Authority	221,392.7	0.0	0.0	0.0
Program Summary Total:	221,392.7	0.0	0.0	0.0
Expenditure Categories				
0000 FTE Positions	17.6	0.0	0.0	0.0
6000 Personal Services	1,116.7	0.0	0.0	0.0
6100 Employee Related Expenses	416.4	0.0	0.0	0.0
6200 Professional and Outside Services	389.9	0.0	0.0	0.0
6500 Travel In-State	14.9	0.0	0.0	0.0
6600 Travel Out of State	4.5	0.0	0.0	0.0
6700 Food (Library for Universities)	0.0	0.0	0.0	0.0
6800 Aid to Organizations and Individuals	132,838.1	0.0	0.0	0.0
7000 Other Operating Expenses	202.9	0.0	0.0	0.0
8000 Equipment	15.2	0.0	0.0	0.0
8100 Capital Outlay	0.0	0.0	0.0	0.0
8600 Debt Service	84,626.2	0.0	0.0	0.0
9000 Cost Allocation	0.0	0.0	0.0	0.0
9100 Transfers	1,767.8	0.0	0.0	0.0
Expenditure Categories Total:	221,392.7	0.0	0.0	0.0
Fund Source				
Non-Appropriated Funds				
2000-N Federal Capitalization Grant (Non-Appropriated)	28,543.1	0.0	0.0	0.0
2254-N Clean Water Revolving Fund (Non-Appropriated)	150,568.2	0.0	0.0	0.0
2307-N Drinking Water Revolving Fund (Non-Appropriated)	42,281.4	0.0	0.0	0.0
Fund Source Total:	221,392.7	0.0	0.0	0.0

Program Group Summary of Expenditures and Budget Request for Selected Funds

Agency:	WFA	Water Infrastructure Finance Authority
Program:	1	Water Quality Program

	FY 2016 Actual	FY 2017 Expd. Plan	FY 2018 Fund. Issue	FY 2018 Total
--	-------------------	-----------------------	------------------------	------------------

Fund:	2000-N	Federal Capitalization Grant (Non-Appropriated)
--------------	--------	---

Program Expenditures

COST CENTER/PROGRAM BUDGET UNIT

1-1	Water Infrastructure Finance Authority	28,543.1	0.0	0.0	0.0
	Total	28,543.1	0.0	0.0	0.0

Non-Appropriated Funding

Expenditure Categories

FTE Positions	13.5	0.0	0.0	0.0
Personal Services	732.7	0.0	0.0	0.0
Employee Related Expenses	280.7	0.0	0.0	0.0
Professional and Outside Services	152.1	0.0	0.0	0.0
Travel In-State	9.5	0.0	0.0	0.0
Travel Out of State	3.4	0.0	0.0	0.0
Food (Library for Universities)	0.0	0.0	0.0	0.0
Aid to Organizations and Individuals	25,504.3	0.0	0.0	0.0
Other Operating Expenses	101.7	0.0	0.0	0.0
Equipment	10.9	0.0	0.0	0.0
Capital Outlay	0.0	0.0	0.0	0.0
Debt Service	0.0	0.0	0.0	0.0
Cost Allocation	0.0	0.0	0.0	0.0
Transfers	1,747.8	0.0	0.0	0.0

Expenditure Categories Total:	28,543.1	0.0	0.0	0.0
--------------------------------------	----------	-----	-----	-----

Fund 2000-N Total:	28,543.1	0.0	0.0	0.0
---------------------------	----------	-----	-----	-----

Program 1 Total:	28,543.1	0.0	0.0	0.0
-------------------------	----------	-----	-----	-----

Program Group Summary of Expenditures and Budget Request for Selected Funds

Agency:	WFA	Water Infrastructure Finance Authority
Program:	1	Water Quality Program

	FY 2016 Actual	FY 2017 Expd. Plan	FY 2018 Fund. Issue	FY 2018 Total
--	-------------------	-----------------------	------------------------	------------------

Fund:	2254-N	Clean Water Revolving Fund (Non-Appropriated)
--------------	--------	---

Program Expenditures

COST CENTER/PROGRAM BUDGET UNIT

1-1	Water Infrastructure Finance Authority	150,568.2	0.0	0.0	0.0
	Total	150,568.2	0.0	0.0	0.0

Non-Appropriated Funding

Expenditure Categories

FTE Positions	0.8	0.0	0.0	0.0
Personal Services	203.5	0.0	0.0	0.0
Employee Related Expenses	70.3	0.0	0.0	0.0
Professional and Outside Services	118.3	0.0	0.0	0.0
Travel In-State	2.5	0.0	0.0	0.0
Travel Out of State	0.6	0.0	0.0	0.0
Food (Library for Universities)	0.0	0.0	0.0	0.0
Aid to Organizations and Individuals	64,949.6	0.0	0.0	0.0
Other Operating Expenses	68.6	0.0	0.0	0.0
Equipment	1.6	0.0	0.0	0.0
Capital Outlay	0.0	0.0	0.0	0.0
Debt Service	68,720.1	0.0	0.0	0.0
Cost Allocation	0.0	0.0	0.0	0.0
Transfers	16,433.2	0.0	0.0	0.0

Expenditure Categories Total:	150,568.2	0.0	0.0	0.0
--------------------------------------	-----------	-----	-----	-----

Fund 2254-N Total:	150,568.2	0.0	0.0	0.0
---------------------------	-----------	-----	-----	-----

Program 1 Total:	150,568.2	0.0	0.0	0.0
-------------------------	-----------	-----	-----	-----

Program Group Summary of Expenditures and Budget Request for Selected Funds

Agency:	WFA	Water Infrastructure Finance Authority
Program:	1	Water Quality Program

	FY 2016 Actual	FY 2017 Expd. Plan	FY 2018 Fund. Issue	FY 2018 Total
--	-------------------	-----------------------	------------------------	------------------

Fund:	2307-N	Drinking Water Revolving Fund (Non-Appropriated)
--------------	--------	--

Program Expenditures

COST CENTER/PROGRAM BUDGET UNIT

1-1	Water Infrastructure Finance Authority	42,281.4	0.0	0.0	0.0
	Total	42,281.4	0.0	0.0	0.0

Non-Appropriated Funding

Expenditure Categories

FTE Positions	3.3	0.0	0.0	0.0
Personal Services	180.6	0.0	0.0	0.0
Employee Related Expenses	65.4	0.0	0.0	0.0
Professional and Outside Services	119.5	0.0	0.0	0.0
Travel In-State	3.0	0.0	0.0	0.0
Travel Out of State	0.5	0.0	0.0	0.0
Food (Library for Universities)	0.0	0.0	0.0	0.0
Aid to Organizations and Individuals	42,384.2	0.0	0.0	0.0
Other Operating Expenses	32.5	0.0	0.0	0.0
Equipment	2.7	0.0	0.0	0.0
Capital Outlay	0.0	0.0	0.0	0.0
Debt Service	15,906.1	0.0	0.0	0.0
Cost Allocation	0.0	0.0	0.0	0.0
Transfers	(16,413.2)	0.0	0.0	0.0

Expenditure Categories Total:	42,281.4	0.0	0.0	0.0
--------------------------------------	----------	-----	-----	-----

Fund 2307-N Total:	42,281.4	0.0	0.0	0.0
---------------------------	----------	-----	-----	-----

Program 1 Total:	42,281.4	0.0	0.0	0.0
-------------------------	----------	-----	-----	-----

Program Budget Unit Summary of Expenditures and Budget Request for All Funds

Agency:	WFA	Water Infrastructure Finance Authority
Program:	1-1	Water Infrastructure Finance Authority

Expenditure Categories	FY 2016 Actual	FY 2017 Expd. Plan	FY 2018 Fund. Issue	FY 2018 Total
0000 FTE	17.6	0.0	0.0	0.0
6000 Personal Services	1,116.7	0.0	0.0	0.0
6100 Employee Related Expenses	416.4	0.0	0.0	0.0
6200 Professional and Outside Services	389.9	0.0	0.0	0.0
6500 Travel In-State	14.9	0.0	0.0	0.0
6600 Travel Out of State	4.5	0.0	0.0	0.0
6700 Food (Library for Universities)	0.0	0.0	0.0	0.0
6800 Aid to Organizations and Individuals	132,838.1	0.0	0.0	0.0
7000 Other Operating Expenses	202.9	0.0	0.0	0.0
8000 Equipment	15.2	0.0	0.0	0.0
8100 Capital Outlay	0.0	0.0	0.0	0.0
8600 Debt Service	84,626.2	0.0	0.0	0.0
9000 Cost Allocation	0.0	0.0	0.0	0.0
9100 Transfers	1,767.8	0.0	0.0	0.0
Expenditure Categories Total:	221,392.7	0.0	0.0	0.0
Fund Source				
Non-Appropriated Funds				
2000-N Federal Capitalization Grant (Non-Appropriated)	28,543.1	0.0	0.0	0.0
2254-N Clean Water Revolving Fund (Non-Appropriated)	150,568.2	0.0	0.0	0.0
2307-N Drinking Water Revolving Fund (Non-Appropriated)	42,281.4	0.0	0.0	0.0
Fund Source Total:	221,392.7	0.0	0.0	0.0

Program Budget Unit Summary of Expenditures and Budget Request for Selected Funds

Agency:	WFA Water Infrastructure Finance Authority				
		FY 2016	FY 2017	FY 2018	FY 2018
		Actual	Expd. Plan	Fund. Issue	Total
Program:	1-1 Water Infrastructure Finance Authority				
Fund:	2000-N Federal Capitalization Grant				
	Non-Appropriated				
0000	FTE	13.5	0.0	0.0	0.0
6000	Personal Services	732.7	0.0	0.0	0.0
6100	Employee Related Expenses	280.7	0.0	0.0	0.0
6200	Professional and Outside Services	152.1	0.0	0.0	0.0
6500	Travel In-State	9.5	0.0	0.0	0.0
6600	Travel Out of State	3.4	0.0	0.0	0.0
6700	Food (Library for Universities)	0.0	0.0	0.0	0.0
6800	Aid to Organizations and Individuals	25,504.3	0.0	0.0	0.0
7000	Other Operating Expenses	101.7	0.0	0.0	0.0
8000	Equipment	10.9	0.0	0.0	0.0
8100	Capital Outlay	0.0	0.0	0.0	0.0
8600	Debt Service	0.0	0.0	0.0	0.0
9000	Cost Allocation	0.0	0.0	0.0	0.0
9100	Transfers	1,747.8	0.0	0.0	0.0
	Non-Appropriated Total:	28,543.1	0.0	0.0	0.0
	Fund Total:	28,543.1	0.0	0.0	0.0
	Program Total For Selected Funds:	28,543.1	0.0	0.0	0.0

Program Budget Unit Summary of Expenditures and Budget Request for Selected Funds

Agency:	WFA Water Infrastructure Finance Authority				
	FY 2016	FY 2017	FY 2018	FY 2018	
	Actual	Expd. Plan	Fund. Issue	Total	
Program:	1-1 Water Infrastructure Finance Authority				
Fund:	2254-N Clean Water Revolving Fund				
Non-Appropriated					
0000	FTE	0.8	0.0	0.0	0.0
6000	Personal Services	203.5	0.0	0.0	0.0
6100	Employee Related Expenses	70.3	0.0	0.0	0.0
6200	Professional and Outside Services	118.3	0.0	0.0	0.0
6500	Travel In-State	2.5	0.0	0.0	0.0
6600	Travel Out of State	0.6	0.0	0.0	0.0
6700	Food (Library for Universities)	0.0	0.0	0.0	0.0
6800	Aid to Organizations and Individuals	64,949.6	0.0	0.0	0.0
7000	Other Operating Expenses	68.6	0.0	0.0	0.0
8000	Equipment	1.6	0.0	0.0	0.0
8100	Capital Outlay	0.0	0.0	0.0	0.0
8600	Debt Service	68,720.1	0.0	0.0	0.0
9000	Cost Allocation	0.0	0.0	0.0	0.0
9100	Transfers	16,433.2	0.0	0.0	0.0
Non-Appropriated Total:		150,568.2	0.0	0.0	0.0
Fund Total:		150,568.2	0.0	0.0	0.0
Program Total For Selected Funds:		150,568.2	0.0	0.0	0.0

Program Budget Unit Summary of Expenditures and Budget Request for Selected Funds

Agency:	WFA Water Infrastructure Finance Authority			
	FY 2016	FY 2017	FY 2018	FY 2018
	Actual	Expd. Plan	Fund. Issue	Total
Program:	1-1 Water Infrastructure Finance Authority			
Fund:	2307-N Drinking Water Revolving Fund			
Non-Appropriated				
0000 FTE	3.3	0.0	0.0	0.0
6000 Personal Services	180.6	0.0	0.0	0.0
6100 Employee Related Expenses	65.4	0.0	0.0	0.0
6200 Professional and Outside Services	119.5	0.0	0.0	0.0
6500 Travel In-State	3.0	0.0	0.0	0.0
6600 Travel Out of State	0.5	0.0	0.0	0.0
6700 Food (Library for Universities)	0.0	0.0	0.0	0.0
6800 Aid to Organizations and Individuals	42,384.2	0.0	0.0	0.0
7000 Other Operating Expenses	32.5	0.0	0.0	0.0
8000 Equipment	2.7	0.0	0.0	0.0
8100 Capital Outlay	0.0	0.0	0.0	0.0
8600 Debt Service	15,906.1	0.0	0.0	0.0
9000 Cost Allocation	0.0	0.0	0.0	0.0
9100 Transfers	(16,413.2)	0.0	0.0	0.0
Non-Appropriated Total:	42,281.4	0.0	0.0	0.0
Fund Total:	42,281.4	0.0	0.0	0.0
Program Total For Selected Funds:	42,281.4	0.0	0.0	0.0

Program Expenditure Schedule

Agency:	WFA Water Infrastructure Finance Authority
Program:	1-1 Water Infrastructure Finance Authority

Expenditure Category	FY 2016 Actual	FY 2017 Expd. Plan
FTE Positions		
FTE	17.6	0.0
Expenditure Category Total	17.6	0.0
Fund Source		
Non-Appropriated		
2000-N Federal Capitalization Grant (Non-Appropriated)	13.5	0.0
2254-N Clean Water Revolving Fund (Non-Appropriated)	0.8	0.0
2307-N Drinking Water Revolving Fund (Non-Appropriated)	3.3	0.0
Fund Source Total	17.6	0.0

Expenditure Category	FY 2016 Actual	FY 2017 Expd. Plan
Personal Services		
Personal Services	1,116.7	0.0
Boards and Commissions	0.0	0.0
Expenditure Category Total	1,116.7	0.0
Fund Source		
Non-Appropriated		
2000-N Federal Capitalization Grant (Non-Appropriated)	732.7	0.0
2254-N Clean Water Revolving Fund (Non-Appropriated)	203.5	0.0
2307-N Drinking Water Revolving Fund (Non-Appropriated)	180.6	0.0
Fund Source Total	1,116.7	0.0

Expenditure Category	FY 2016 Actual	FY 2017 Expd. Plan
Employee Related Expenses		
Employee Related Expenses	416.4	0.0
Expenditure Category Total	416.4	0.0
Fund Source		
Non-Appropriated		
2000-N Federal Capitalization Grant (Non-Appropriated)	280.7	0.0
2254-N Clean Water Revolving Fund (Non-Appropriated)	70.3	0.0
2307-N Drinking Water Revolving Fund (Non-Appropriated)	65.4	0.0
Fund Source Total	416.4	0.0

Expenditure Category	FY 2016 Actual	FY 2017 Expd. Plan
Professional & Outside Services		
External Prof/Outside Serv Budg And Appn	0.0	0.0
External Investment Services	0.0	0.0
Other External Financial Services	7.6	0.0
Attorney General Legal Services	0.0	0.0
External Legal Services	163.0	0.0
External Engineer/Architect Cost - Exp	0.0	0.0
External Engineer/Architect Cost- Cap	0.0	0.0
Other Design	0.0	0.0

Program Expenditure Schedule

Agency:	WFA Water Infrastructure Finance Authority
Program:	1-1 Water Infrastructure Finance Authority

Expenditure Category	FY 2016 Actual	FY 2017 Expd. Plan
Professional & Outside Services		
Temporary Agency Services	0.0	0.0
Hospital Services	0.0	0.0
Other Medical Services	0.0	0.0
Institutional Care	0.0	0.0
Education And Training	0.0	0.0
Vendor Travel	0.0	0.0
Professional & Outside Services Excluded from Cost Alloca	0.0	0.0
Vendor Travel - Non Reportable	0.0	0.0
External Telecom Consulting Services	0.0	0.0
Non - Confidential Specialist Fees	0.0	0.0
Confidential Specialist Fees	0.0	0.0
Outside Actuarial Costs	0.0	0.0
Other Professional And Outside Services	219.4	0.0
Expenditure Category Total	389.9	0.0

Fund Source		
Non-Appropriated		
2000-N Federal Capitalization Grant (Non-Appropriated)	152.1	0.0
2254-N Clean Water Revolving Fund (Non-Appropriated)	118.3	0.0
2307-N Drinking Water Revolving Fund (Non-Appropriated)	119.5	0.0
	389.9	0.0
Fund Source Total	389.9	0.0

Expenditure Category	FY 2016 Actual	FY 2017 Expd. Plan
Travel In-State		
Travel In-State	14.9	0.0
Expenditure Category Total	14.9	0.0

Fund Source		
Non-Appropriated		
2000-N Federal Capitalization Grant (Non-Appropriated)	9.5	0.0
2254-N Clean Water Revolving Fund (Non-Appropriated)	2.5	0.0
2307-N Drinking Water Revolving Fund (Non-Appropriated)	3.0	0.0
	14.9	0.0
Fund Source Total	14.9	0.0

Expenditure Category	FY 2016 Actual	FY 2017 Expd. Plan
Travel Out-of-State		
Travel Out of State	4.5	0.0
Expenditure Category Total	4.5	0.0

Fund Source		
Non-Appropriated		
2000-N Federal Capitalization Grant (Non-Appropriated)	3.4	0.0
2254-N Clean Water Revolving Fund (Non-Appropriated)	0.6	0.0
2307-N Drinking Water Revolving Fund (Non-Appropriated)	0.5	0.0
	4.5	0.0
Fund Source Total	4.5	0.0

Program Expenditure Schedule

Agency:	WFA Water Infrastructure Finance Authority
Program:	1-1 Water Infrastructure Finance Authority

Expenditure Category	FY 2016 Actual	FY 2017 Expd. Plan
Food (Library for Universities)		
Food (Library for Universities)	0.0	0.0
Expenditure Category Total	0.0	0.0

Expenditure Category	FY 2016 Actual	FY 2017 Expd. Plan
Aid to Organizations & Individuals		
Aid to Organizations and Individuals	132,838.1	0.0
Expenditure Category Total	132,838.1	0.0

Fund Source	FY 2016 Actual	FY 2017 Expd. Plan
Non-Appropriated		
2000-N Federal Capitalization Grant (Non-Appropriated)	25,504.3	0.0
2254-N Clean Water Revolving Fund (Non-Appropriated)	64,949.6	0.0
2307-N Drinking Water Revolving Fund (Non-Appropriated)	42,384.2	0.0
Fund Source Total	132,838.1	0.0

Expenditure Category	FY 2016 Actual	FY 2017 Expd. Plan
Other Operating Expenditures		
Other Operating Expenditures	0.0	0.0
Insurance & Related Charges	5.6	0.0
Information Technology Services	30.1	0.0
Utilities	0.0	0.0
Non-Building or Land Rent	0.0	0.0
Building Rent Charges to State Agencies	114.0	0.0
COP Building Rent Charges to State Agencies	0.0	0.0
Rental of Land & Buildings	0.0	0.0
Interest Payments	0.0	0.0
Internal Acct, Budgeting and Financial Svcs.	0.0	0.0
Payments for Internal Services	0.0	0.0
Repair & Maintenance	0.0	0.0
Software Support and Maintenance	4.4	0.0
Operating Supplies	4.0	0.0
Resale Supplies	0.4	0.0
Sales of Assets	0.0	0.0
Conference, Education & Training	13.7	0.0
Advertising	0.7	0.0
Printing & Photography	0.5	0.0
Postage & Delivery	2.5	0.0
Miscellaneous Operating	26.9	0.0
Depreciation Expense	0.0	0.0

Program Expenditure Schedule

Agency:	WFA Water Infrastructure Finance Authority
Program:	1-1 Water Infrastructure Finance Authority

Expenditure Category	FY 2016 Actual	FY 2017 Expd. Plan
Other Operating Expenditures		
Expenditure Category Total	202.9	0.0
Fund Source		
Non-Appropriated		
2000-N Federal Capitalization Grant (Non-Appropriated)	101.7	0.0
2254-N Clean Water Revolving Fund (Non-Appropriated)	68.6	0.0
2307-N Drinking Water Revolving Fund (Non-Appropriated)	32.5	0.0
	202.9	0.0
Fund Source Total	202.9	0.0

Expenditure Category	FY 2016 Actual	FY 2017 Expd. Plan
Equipment		
Vehicles - Capital Leases	0.0	0.0
Furniture - Capital Leases	0.0	0.0
EDP Equipment - Mainframe - Capital Leases	0.0	0.0
EDP Equipment - Midrange - Capital Leases	0.0	0.0
EDP Equipment - PCs/LAN - Capital Leases	0.0	0.0
Telecommunication Equipment - Capital Leases	0.0	0.0
Other Equipment - Capital Leases	0.0	0.0
Capital Equipment Purchases	0.0	0.0
Vehicles - Non-Capital	0.0	0.0
Furniture - Non-Capital	8.2	0.0
EDP Equipment - Mainframe - Non-Capital	0.0	0.0
Telecommunication Equipment - Non Capital	0.0	0.0
Other Equipment - Non-Capital	6.6	0.0
Purchased Or Licensed Software/Website	0.4	0.0
Internally Generated Software/Website	0.0	0.0
	15.2	0.0
Expenditure Category Total	15.2	0.0
Fund Source		
Non-Appropriated		
2000-N Federal Capitalization Grant (Non-Appropriated)	10.9	0.0
2254-N Clean Water Revolving Fund (Non-Appropriated)	1.6	0.0
2307-N Drinking Water Revolving Fund (Non-Appropriated)	2.7	0.0
	15.2	0.0
Fund Source Total	15.2	0.0

Expenditure Category	FY 2016 Actual	FY 2017 Expd. Plan
Capital Outlay		
Capital Outlay	0.0	0.0
	0.0	0.0
Expenditure Category Total	0.0	0.0

Expenditure Category	FY 2016 Actual	FY 2017 Expd. Plan
Debt Services		
Debt Service	84,626.2	0.0

Program Expenditure Schedule

Agency:	WFA Water Infrastructure Finance Authority
Program:	1-1 Water Infrastructure Finance Authority

<u>Expenditure Category</u>	<u>FY 2016 Actual</u>	<u>FY 2017 Expd. Plan</u>
Debt Services		
Expenditure Category Total	84,626.2	0.0
Fund Source		
Non-Appropriated		
2254-N Clean Water Revolving Fund (Non-Appropriated)	68,720.1	0.0
2307-N Drinking Water Revolving Fund (Non-Appropriated)	15,906.1	0.0
Fund Source Total	84,626.2	0.0

<u>Expenditure Category</u>	<u>FY 2016 Actual</u>	<u>FY 2017 Expd. Plan</u>
Cost Allocation		
Cost Allocation	0.0	0.0
Expenditure Category Total	0.0	0.0

<u>Expenditure Category</u>	<u>FY 2016 Actual</u>	<u>FY 2017 Expd. Plan</u>
Transfers		
Transfers	1,767.8	0.0
Expenditure Category Total	1,767.8	0.0
Fund Source		
Non-Appropriated		
2000-N Federal Capitalization Grant (Non-Appropriated)	1,747.8	0.0
2254-N Clean Water Revolving Fund (Non-Appropriated)	16,433.2	0.0
2307-N Drinking Water Revolving Fund (Non-Appropriated)	(16,413.2)	0.0
Fund Source Total	1,767.8	0.0

Classification Listing

<u>Class Code</u>	<u>Title</u>	<u>Grade</u>	<u>Total FTE</u>
AUN06	ADMV ASST 2	15	1.0
AUN06	ADMV SVCS OFFCR 1	19	2.0
AUN09	ADMV SVCS OFFCR 2	21	1.0
AUN04	ADMV SVCS OFFCR 3	22	1.0
AUN09	CMTY OUTRCH COORD	21	1.0
AUN04	COMPTROLLER	24	0.9
AUN03	ENVMTL PROG SPCT	20	1.0
AUN03	ENVMTL PROG SPV	22	2.0
AUN01	INFO TECH SPCT 3	C3	2.0
AUN04	SR PROG ADMR	23	0.9
AUN07	WF CFO	24	1.0

Program Expenditure Schedule

Agency: WFA Water Infrastructure Finance Authority

Program: 1-1 Water Infrastructure Finance Authority

AUN04	WF EXEC ASST	19	1.0
AUN02	WF EXEC DIR	E3	1.0
AUN07	WF SR LOAN OFFCR	22	1.8

**Combined Regular & Elected Positions At/Above
FICA Maximum of \$118,500**

Total FTE	Personal Services	FTE's not eligible for Health, Dental & Life
0.0	0.0	0.0

Program Summary of Expenditures and Budget Request

Agency:	WFA	Water Infrastructure Finance Authority
Program:	2	Community Development

		FY 2016 Actual	FY 2017 Expd. Plan	FY 2018 Fund. Issue	FY 2018 Total
Program Summary					
2-1	Greater Arizona Development Authority	47.6	0.0	0.0	0.0
Program Summary Total:		47.6	0.0	0.0	0.0
Expenditure Categories					
0000	FTE Positions	1.4	0.0	0.0	0.0
6000	Personal Services	4.6	0.0	0.0	0.0
6100	Employee Related Expenses	1.4	0.0	0.0	0.0
6200	Professional and Outside Services	40.8	0.0	0.0	0.0
6500	Travel In-State	0.0	0.0	0.0	0.0
6600	Travel Out of State	0.0	0.0	0.0	0.0
6700	Food (Library for Universities)	0.0	0.0	0.0	0.0
6800	Aid to Organizations and Individuals	0.0	0.0	0.0	0.0
7000	Other Operating Expenses	0.0	0.0	0.0	0.0
8000	Equipment	0.8	0.0	0.0	0.0
8100	Capital Outlay	0.0	0.0	0.0	0.0
8600	Debt Service	0.0	0.0	0.0	0.0
9000	Cost Allocation	0.0	0.0	0.0	0.0
9100	Transfers	0.0	0.0	0.0	0.0
Expenditure Categories Total:		47.6	0.0	0.0	0.0
Fund Source					
Non-Appropriated Funds					
2311-N	Greater AZ Development authority Revolving Fund	47.6	0.0	0.0	0.0
Fund Source Total:		47.6	0.0	0.0	0.0

Program Group Summary of Expenditures and Budget Request for Selected Funds

Agency:	WFA	Water Infrastructure Finance Authority
Program:	2	Community Development

	FY 2016 Actual	FY 2017 Expd. Plan	FY 2018 Fund. Issue	FY 2018 Total
--	-------------------	-----------------------	------------------------	------------------

Fund:	2311-N	Greater AZ Development authority Revolving Fund (Non-Appropriated)
--------------	--------	--

Program Expenditures

COST CENTER/PROGRAM BUDGET UNIT

2-1	Greater Arizona Development Authority	47.6	0.0	0.0	0.0
	Total	47.6	0.0	0.0	0.0

Non-Appropriated Funding

Expenditure Categories

FTE Positions	1.4	0.0	0.0	0.0
Personal Services	4.6	0.0	0.0	0.0
Employee Related Expenses	1.4	0.0	0.0	0.0
Professional and Outside Services	40.8	0.0	0.0	0.0
Travel In-State	0.0	0.0	0.0	0.0
Travel Out of State	0.0	0.0	0.0	0.0
Food (Library for Universities)	0.0	0.0	0.0	0.0
Aid to Organizations and Individuals	0.0	0.0	0.0	0.0
Other Operating Expenses	0.0	0.0	0.0	0.0
Equipment	0.8	0.0	0.0	0.0
Capital Outlay	0.0	0.0	0.0	0.0
Debt Service	0.0	0.0	0.0	0.0
Cost Allocation	0.0	0.0	0.0	0.0
Transfers	0.0	0.0	0.0	0.0

Expenditure Categories Total:	47.6	0.0	0.0	0.0
--------------------------------------	------	-----	-----	-----

Fund 2311-N Total:	47.6	0.0	0.0	0.0
---------------------------	------	-----	-----	-----

Program 2 Total:	47.6	0.0	0.0	0.0
-------------------------	------	-----	-----	-----

Program Budget Unit Summary of Expenditures and Budget Request for All Funds

Agency:	WFA	Water Infrastructure Finance Authority
Program:	2-4	Greater Arizona Development Authority

Expenditure Categories	FY 2016 Actual	FY 2017 Expd. Plan	FY 2018 Fund. Issue	FY 2018 Total
0000 FTE	1.4	0.0	0.0	0.0
6000 Personal Services	4.6	0.0	0.0	0.0
6100 Employee Related Expenses	1.4	0.0	0.0	0.0
6200 Professional and Outside Services	40.8	0.0	0.0	0.0
6500 Travel In-State	0.0	0.0	0.0	0.0
6600 Travel Out of State	0.0	0.0	0.0	0.0
6700 Food (Library for Universities)	0.0	0.0	0.0	0.0
6800 Aid to Organizations and Individuals	0.0	0.0	0.0	0.0
7000 Other Operating Expenses	0.0	0.0	0.0	0.0
8000 Equipment	0.8	0.0	0.0	0.0
8100 Capital Outlay	0.0	0.0	0.0	0.0
8600 Debt Service	0.0	0.0	0.0	0.0
9000 Cost Allocation	0.0	0.0	0.0	0.0
9100 Transfers	0.0	0.0	0.0	0.0
Expenditure Categories Total:	47.6	0.0	0.0	0.0
Fund Source				
Non-Appropriated Funds				
2311-N Greater AZ Development authority Revolving Fund	47.6	0.0	0.0	0.0
	47.6	0.0	0.0	0.0
Fund Source Total:	47.6	0.0	0.0	0.0

Program Budget Unit Summary of Expenditures and Budget Request for Selected Funds

Agency:	WFA Water Infrastructure Finance Authority				
		FY 2016	FY 2017	FY 2018	FY 2018
		Actual	Expd. Plan	Fund. Issue	Total
Program:	2-4 Greater Arizona Development Authority				
Fund:	2311-N Greater AZ Development authority Revolving Fund				
	Non-Appropriated				
0000	FTE	1.4	0.0	0.0	0.0
6000	Personal Services	4.6	0.0	0.0	0.0
6100	Employee Related Expenses	1.4	0.0	0.0	0.0
6200	Professional and Outside Services	40.8	0.0	0.0	0.0
6500	Travel In-State	0.0	0.0	0.0	0.0
6600	Travel Out of State	0.0	0.0	0.0	0.0
6700	Food (Library for Universities)	0.0	0.0	0.0	0.0
6800	Aid to Organizations and Individuals	0.0	0.0	0.0	0.0
7000	Other Operating Expenses	0.0	0.0	0.0	0.0
8000	Equipment	0.8	0.0	0.0	0.0
8100	Capital Outlay	0.0	0.0	0.0	0.0
8600	Debt Service	0.0	0.0	0.0	0.0
9000	Cost Allocation	0.0	0.0	0.0	0.0
9100	Transfers	0.0	0.0	0.0	0.0
	Non-Appropriated Total:	47.6	0.0	0.0	0.0
	Fund Total:	47.6	0.0	0.0	0.0
	Program Total For Selected Funds:	47.6	0.0	0.0	0.0

Program Expenditure Schedule

Agency:	WFA Water Infrastructure Finance Authority
Program:	2-1 Greater Arizona Development Authority

Expenditure Category	FY 2016 Actual	FY 2017 Expd. Plan
FTE Positions		
FTE	1.4	0.0
Expenditure Category Total	1.4	0.0
Fund Source		
Non-Appropriated		
2311-N Greater AZ Development authority Revolving Fund (Non-App)	1.4	0.0
Fund Source Total	1.4	0.0

Expenditure Category	FY 2016 Actual	FY 2017 Expd. Plan
Personal Services		
Personal Services	4.6	0.0
Boards and Commissions	0.0	0.0
Expenditure Category Total	4.6	0.0
Fund Source		
Non-Appropriated		
2311-N Greater AZ Development authority Revolving Fund (Non-App)	4.6	0.0
Fund Source Total	4.6	0.0

Expenditure Category	FY 2016 Actual	FY 2017 Expd. Plan
Employee Related Expenses		
Employee Related Expenses	1.4	0.0
Expenditure Category Total	1.4	0.0
Fund Source		
Non-Appropriated		
2311-N Greater AZ Development authority Revolving Fund (Non-App)	1.4	0.0
Fund Source Total	1.4	0.0

Expenditure Category	FY 2016 Actual	FY 2017 Expd. Plan
Professional & Outside Services		
External Prof/Outside Serv Budg And Appn	0.0	0.0
External Investment Services	0.0	0.0
Other External Financial Services	2.8	0.0
Attorney General Legal Services	0.0	0.0
External Legal Services	0.0	0.0
External Engineer/Architect Cost - Exp	0.0	0.0
External Engineer/Architect Cost- Cap	0.0	0.0
Other Design	0.0	0.0
Temporary Agency Services	0.0	0.0
Hospital Services	0.0	0.0
Other Medical Services	0.0	0.0
Institutional Care	0.0	0.0
Education And Training	0.0	0.0
Vendor Travel	0.0	0.0

Program Expenditure Schedule

Agency:	WFA Water Infrastructure Finance Authority
Program:	2-1 Greater Arizona Development Authority

Expenditure Category	FY 2016 Actual	FY 2017 Expd. Plan
Professional & Outside Services		
Professional & Outside Services Excluded from Cost Alloca	0.0	0.0
Vendor Travel - Non Reportable	0.0	0.0
External Telecom Consulting Services	0.0	0.0
Non - Confidential Specialist Fees	0.0	0.0
Confidential Specialist Fees	0.0	0.0
Outside Actuarial Costs	0.0	0.0
Other Professional And Outside Services	38.0	0.0
Expenditure Category Total	40.8	0.0

Fund Source	FY 2016 Actual	FY 2017 Expd. Plan
Non-Appropriated		
2311-N Greater AZ Development authority Revolving Fund (Non-App	40.8	0.0
Fund Source Total	40.8	0.0

Expenditure Category	FY 2016 Actual	FY 2017 Expd. Plan
Travel In-State		
Travel In-State	0.0	0.0
Expenditure Category Total	0.0	0.0

Expenditure Category	FY 2016 Actual	FY 2017 Expd. Plan
Travel Out-of-State		
Travel Out of State	0.0	0.0
Expenditure Category Total	0.0	0.0

Expenditure Category	FY 2016 Actual	FY 2017 Expd. Plan
Food (Library for Universities)		
Food (Library for Universities)	0.0	0.0
Expenditure Category Total	0.0	0.0

Expenditure Category	FY 2016 Actual	FY 2017 Expd. Plan
Aid to Organizations & Individuals		
Aid to Organizations and Individuals	0.0	0.0
Expenditure Category Total	0.0	0.0

Expenditure Category	FY 2016 Actual	FY 2017 Expd. Plan
Other Operating Expenditures		
Other Operating Expenditures	0.0	0.0
Insurance & Related Charges	0.0	0.0
Information Technology Services	0.0	0.0
Utilities	0.0	0.0
Non-Building or Land Rent	0.0	0.0

Program Expenditure Schedule

Agency:	WFA Water Infrastructure Finance Authority
Program:	2-1 Greater Arizona Development Authority

Expenditure Category	FY 2016 Actual	FY 2017 Expd. Plan
Other Operating Expenditures		
Building Rent Charges to State Agencies	0.0	0.0
COP Building Rent Charges to State Agencies	0.0	0.0
Rental of Land & Buildings	0.0	0.0
Interest Payments	0.0	0.0
Internal Acct, Budgeting and Financial Svcs.	0.0	0.0
Payments for Internal Services	0.0	0.0
Repair & Maintenance	0.0	0.0
Software Support and Maintenance	0.0	0.0
Operating Supplies	0.0	0.0
Resale Supplies	0.0	0.0
Sales of Assets	0.0	0.0
Conference, Education & Training	0.0	0.0
Advertising	0.0	0.0
Printing & Photography	0.0	0.0
Postage & Delivery	0.0	0.0
Miscellaneous Operating	0.0	0.0
Depreciation Expense	0.0	0.0
Expenditure Category Total	0.0	0.0

Expenditure Category	FY 2016 Actual	FY 2017 Expd. Plan
Equipment		
Vehicles - Capital Leases	0.0	0.0
Furniture - Capital Leases	0.0	0.0
EDP Equipment - Mainframe - Capital Leases	0.0	0.0
EDP Equipment - Midrange - Capital Leases	0.0	0.0
EDP Equipment - PCs/LAN - Capital Leases	0.0	0.0
Telecommunication Equipment - Capital Leases	0.0	0.0
Other Equipment - Capital Leases	0.0	0.0
Capital Equipment Purchases	0.0	0.0
Vehicles - Non-Capital	0.0	0.0
Furniture - Non-Capital	0.8	0.0
EDP Equipment - Mainframe - Non-Capital	0.0	0.0
Telecommunication Equipment - Non Capital	0.0	0.0
Other Equipment - Non-Capital	0.0	0.0
Purchased Or Licensed Software/Website	0.0	0.0
Internally Generated Software/Website	0.0	0.0
Expenditure Category Total	0.8	0.0

Fund Source	FY 2016 Actual	FY 2017 Expd. Plan
Non-Appropriated		
2311-N Greater AZ Development authority Revolving Fund (Non-App)	0.8	0.0
Fund Source Total	0.8	0.0

Expenditure Category	FY 2016 Actual	FY 2017 Expd. Plan
Capital Outlay		
Capital Outlay	0.0	0.0

Program Expenditure Schedule

Agency:	WFA Water Infrastructure Finance Authority
Program:	2-1 Greater Arizona Development Authority

<u>Expenditure Category</u>	<u>FY 2016 Actual</u>	<u>FY 2017 Expd. Plan</u>
Capital Outlay		
Expenditure Category Total	0.0	0.0

<u>Expenditure Category</u>	<u>FY 2016 Actual</u>	<u>FY 2017 Expd. Plan</u>
Debt Services		
Debt Service	0.0	0.0
Expenditure Category Total	0.0	0.0

<u>Expenditure Category</u>	<u>FY 2016 Actual</u>	<u>FY 2017 Expd. Plan</u>
Cost Allocation		
Cost Allocation	0.0	0.0
Expenditure Category Total	0.0	0.0

<u>Expenditure Category</u>	<u>FY 2016 Actual</u>	<u>FY 2017 Expd. Plan</u>
Transfers		
Transfers	0.0	0.0
Expenditure Category Total	0.0	0.0

<u>Fund Source</u>	<u>FY 2016 Actual</u>	<u>FY 2017 Expd. Plan</u>
Non-Appropriated		
2311-N Greater AZ Development authority Revolving Fund (Non-App)	0.0	0.0
Fund Source Total	0.0	0.0

<u>Classification Listing</u>			
<u>Class Code</u>	<u>Title</u>	<u>Grade</u>	<u>Total FTE</u>
AUN09	CMTY OUTRCH COORD	21	0.0
AUN04	COMPTRROLLER	24	0.0
AUN04	SR PROG ADMR	23	1.1
AUN07	WF CFO	24	0.0
AUN02	WF EXEC DIR	E3	0.0
AUN02	WF LOAN OFFCR	23	0.2

Combined Regular & Elected Positions At/Above FICA Maximum of \$118,500

<u>Total FTE</u>	<u>Personal Services</u>	<u>FTE's not eligible for Health, Dental & Life</u>
0.0	0.0	0.0

Administrative Costs

Agency: WFA Water Infrastructure Finance Authority

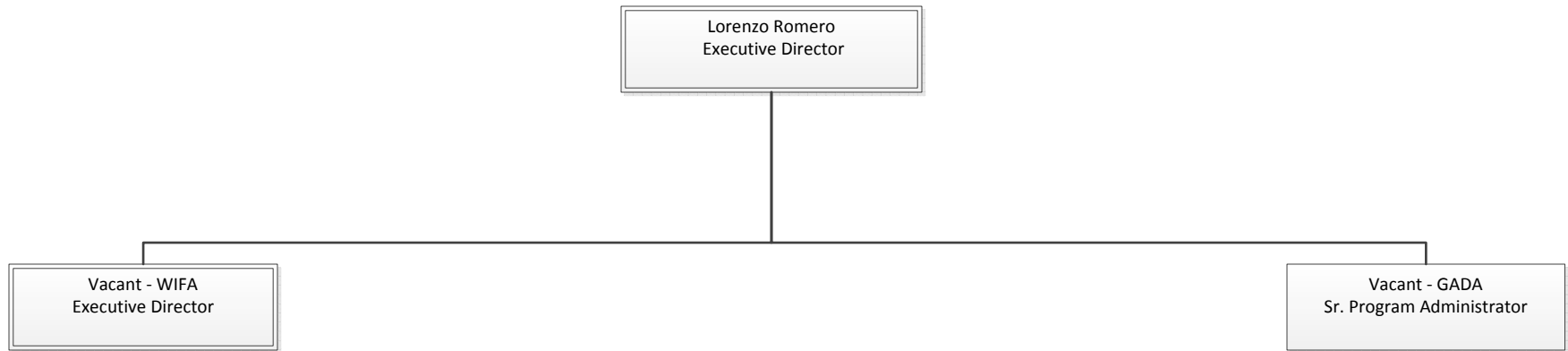
Administrative Costs Summary

<u>Common Administrative Area</u>	<u>FY 2018</u>
Other Central Administration	0.0
Business and Finance	0.0
Information Technology	0.0
Human Resources	0.0
Director's Office	0.0
Administrative Costs Total:	0.0

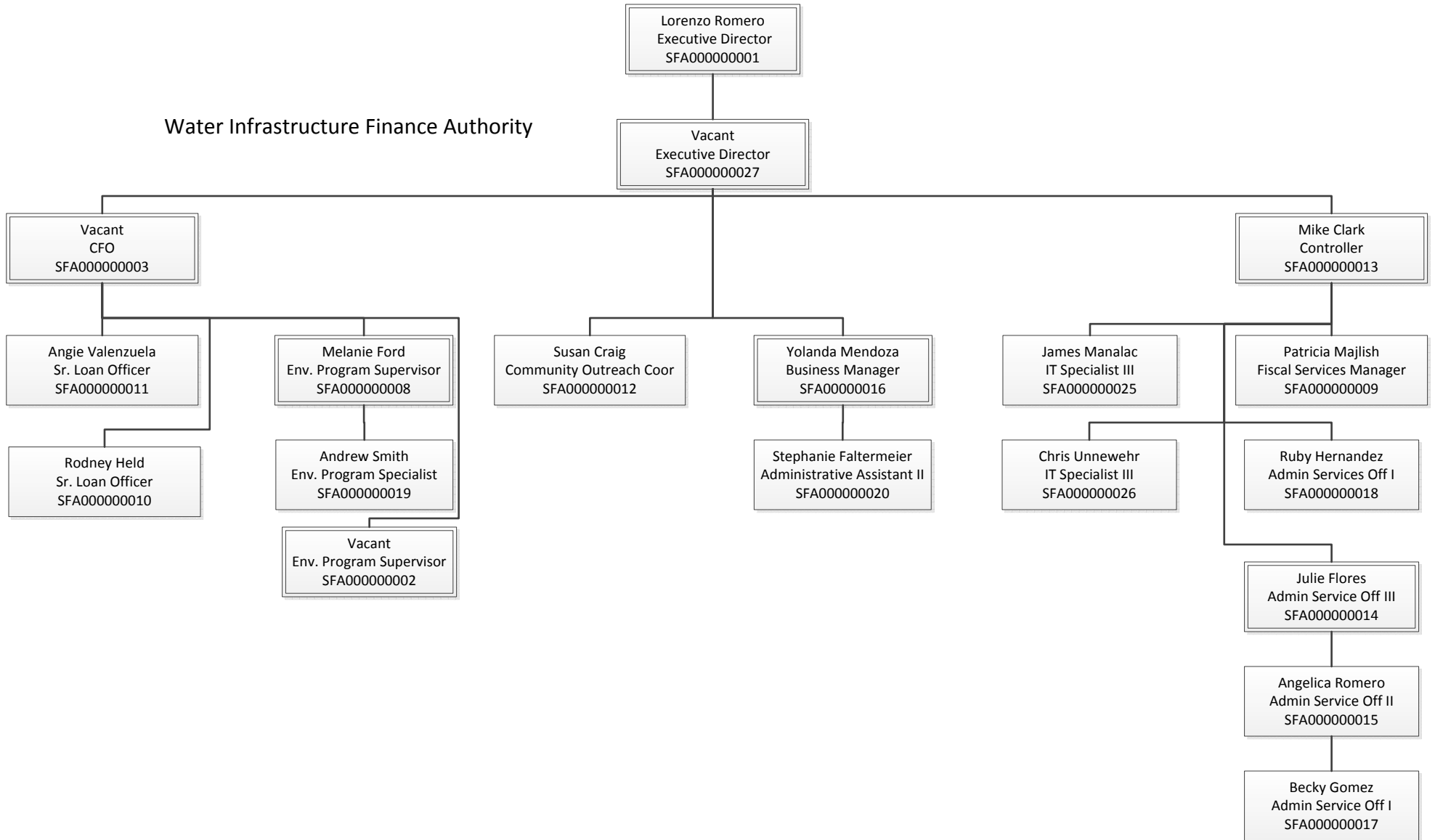
Administrative Cost / Total Expenditure Ratio

	<u>Request</u>	<u>Admin %</u>
FY 2018	0.0	0.0%

Arizona Finance Authority



Arizona Finance Authority



STATE OF ARIZONA
BASE BUDGET JUSTIFICATION
Fiscal Year 2017

AGENCY: Arizona Finance Authority

PROGRAM NAME/SUBPROGRAM: Greater Arizona Development Authority

PROFESSIONAL AND OUTSIDE SERVICES TOTAL - \$63,500

FUND AND NUMBER: Greater Arizona Development Authority (2311)

#6219 Other External Financial Services - \$6,000

Trustee Services -To ensure the payment and administration of bond issues, GADA requires the services of a trustee to provide oversight and security to bond holders.

#6299 Other Professional & Outside Services - \$57,500

Audit (\$19,500) - Under the GADA Statutes, the Fund must be audited by an independent auditor each year.

Arbitrage Services (\$15,000) - Because GADA issues tax-free municipal bonds, a yearly determination must be made to determine whether or not a rebate is due to the federal government.

IT Services (\$15,000) – GADA is being reviewed for a new program. This will fund a portion of the programming. It also provides the funding for our website requirements.

Other Contracting Services (\$8,000) – GADA occasionally requires assistance from an outside contractor.

STATE OF ARIZONA
BASE BUDGET JUSTIFICATION
Fiscal Year 2017

AGENCY: Arizona Finance Authority (FAA)

PROGRAM NAME/SUBPROGRAM: Water Quality Program/ Water Infrastructure Finance Authority

PROFESSIONAL AND OUTSIDE SERVICES TOTAL - \$389,900

FUND AND NUMBER: Clean Water Revolving Fund (2254)

PROFESSIONAL AND OUTSIDE SERVICES - \$149,700

#6219 Other External Financial Services - \$4,000

Trustee Services -To ensure the payment and administration of bond issues, WIFA requires the services of a trustee to provide oversight and security to bond holders.

#6222 External Legal Services - \$32,000

Bond Counsel - Because WIFA issues bonds, the Agency requires the services of an attorney to act as Bond Counsel. Reviews and consults on loan agreement documents. This is a statewide contract issued by DOA.

#6299 Other Professional & Outside Services - \$113,700

Audit (\$14,400) - By federal mandate under the WIFA Statutes, the State Revolving Fund must be audited by an independent auditor each year. WIFA may also uses the audit firm to provide accounting assistance to Technical Assistance recipients and to WIFA.

Arbitrage Services (\$2,400) - Because WIFA issues tax-free municipal bonds, a yearly determination must be made to determine whether or not a rebate is due to the federal government. This is a state wide contract.

IT Services (\$24,000) - Because of staff size limitations WIFA finds it necessary to bring in outside experts to keep pace with rapidly

STATE OF ARIZONA
BASE BUDGET JUSTIFICATION
Fiscal Year 2017

AGENCY: Arizona Finance Authority (FAA)

PROGRAM NAME/SUBPROGRAM: Water Quality Program/ Water Infrastructure Finance Authority

changing technological advances. This includes hardware and software services for WIFA computer network and website maintenance/design. The current program used by WIFA is an EPA designed program and some updates must be contracted through EPA.

Other Contracting Services (\$14,400) – WIFA contracts with outside services to update our annual rate survey and other minor contracts.

Transition Contract (\$58,500) – WIFA has hired a consultant to help with the movement of WIFA to the Arizona Finance Authority. Funding for this position will come for vacancy savings.

FUND AND NUMBER: Drinking Water Revolving Fund (2307)

PROFESSIONAL AND OUTSIDE SERVICES - \$240,200

#6219 Other External Financial Services - \$6,000

Trustee Services - To ensure the payment and administration of bond issues, WIFA requires the services of a trustee to provide oversight and security to bond holders.

#6222 External Legal Services - \$48,000

Bond Counsel - Because WIFA issues bonds, the Agency requires the services of an attorney to act as Bond Counsel. Reviews and consults on loan agreement documents. This is a statewide contract issued by DOA.

STATE OF ARIZONA
BASE BUDGET JUSTIFICATION
Fiscal Year 2017

AGENCY: Arizona Finance Authority (FAA)

PROGRAM NAME/SUBPROGRAM: Water Quality Program/ Water Infrastructure Finance Authority

#6299 Other Professional & Outside Services - \$186,200

Audit (\$21,500) - By federal mandate under the WIFA Statutes, the State Revolving Fund must be audited by an independent auditor each year. WIFA may also uses the audit firm to provide accounting assistance to Technical Assistance recipients and to WIFA.

Arbitrage Services (\$3,600) - Because WIFA issues tax-free municipal bonds, a yearly determination must be made to determine whether or not a rebate is due to the federal government. This is a state wide contract.

IT Services (\$36,000) - Because of staff size limitations WIFA finds it necessary to bring in outside experts to keep pace with rapidly changing technological advances. This includes hardware and software services for WIFA computer network and website maintenance/design. The current program used by WIFA is an EPA designed program and some updates must be contracted through EPA.

Other Contracting Services (\$21,600) – WIFA contracts with outside services to update our annual rate survey and other minor contracts.

Transition Contract (\$103,500) – WIFA has hired a consultant to help with the movement of WIFA to the Arizona Finance Authority. Funding for this position will come for vacancy savings.

STATE OF ARIZONA
BASE BUDGET JUSTIFICATION
Fiscal Year 2017

AGENCY: Arizona Finance Authority (FAA)

PROGRAM NAME/SUBPROGRAM: Water Quality Program/ Water Infrastructure Finance Authority

EQUIPMENT TOTAL - \$58,000

FUND AND NUMBER: Clean Water Revolving Fund (2254)

EQUIPMENT - \$23,200

#8531 Computer Equipment – Non Cap Purchase - \$16,400

WIFA is replacing existing computers with desktops and is trying to establish a replacement program to refresh equipment every 3 years.

8576 Other Equipment – Non capital Leases – 4,800.

WIFA leases its copiers.

#8581 Purchase or license software/websites - \$2,000

This operating expenditure covers the purchase, licensing, support and maintenance of the Microsoft Office XP software and other software and is an annual on-going cost based on the number of units rather than a one-time lump sum purchase cost, as well as our website requirements.

FUND AND NUMBER: Drinking Water Revolving Fund (2307)

EQUIPMENT - \$34,800

#8531 Computer Equipment – Non Cap Purchase - \$24,600

WIFA is replacing existing computers with desktops and is trying to establish a replacement program to refresh equipment every 3

STATE OF ARIZONA
BASE BUDGET JUSTIFICATION
Fiscal Year 2017

AGENCY: Arizona Finance Authority (FAA)

PROGRAM NAME/SUBPROGRAM: Water Quality Program/ Water Infrastructure Finance Authority

years.

8576 Other Equipment – Non capital Leases – 7,200.

WIFA leases its copiers.

#8581 Purchase or license software/websites - \$3,000

This operating expenditure covers the purchase, licensing, support and maintenance of the Microsoft Office XP software and other software and is an annual on-going cost based on the number of units rather than a one-time lump sum purchase cost, as well as our website requirements.